

**Pressure Transmitter**



Warning: Before installation, commissioning, and operation, ensure that the pressure transmitter is suitable for the application in terms of measuring range, design and environmental conditions. Non-observance can result in serious injury and/or damage to equipment.

Intended use: This instrument converts pressure into an electrical signal.

The instrument has been designed and built solely for the intended use described here and may only be used accordingly. If the equipment is used in a different manner, the protection provided by the equipment may be impaired and Trafag shall not be liable for any claims at all.

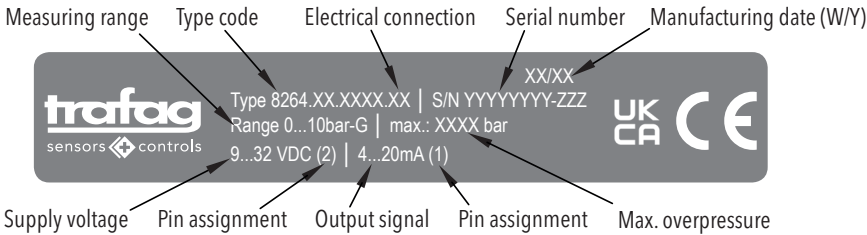
**Datasheet**

**NPN 8264**

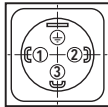
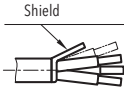


[www.trafag.com/H72313](http://www.trafag.com/H72313)

**Type label description (example)**



**Electrical connections**

|                          |   |   |
|--------------------------|---|---|
| <b>Designation</b>       | EN175301-803-A<br>(DIN 43650-A)   | Cable<br>(FTR) 4 x 0.5 mm <sup>2</sup><br>(ETFE) 3 x 0.75 mm <sup>2</sup>           |
| <b>Type code</b>         | <b>8264.XX.XXXX.04</b>  | <b>8264.XX.XXXX.78/89</b>   |
| <b>Pin configuration</b> |  |  |

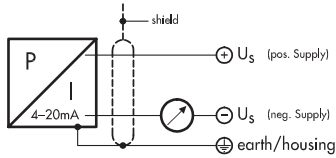
**Output**  
4 ... 20 mA

**Load resistance**  
(U<sub>SUPPLY</sub> -9V)/ 20mA

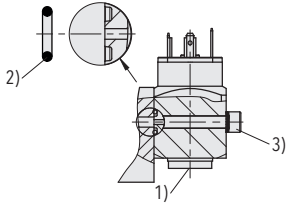
**U<sub>SUPPLY</sub>**  
9 ... 32 VDC

# Connection of the measuring equipment

## Current output 2-wires



## Pressure connection mounting

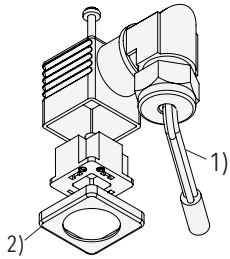


- 1) Torque: G 1/4": M = 32 ... 40 Nm  
G 1/8": M = 16 ... 20 Nm  
M10x1.0: M = 16 ... 20 Nm

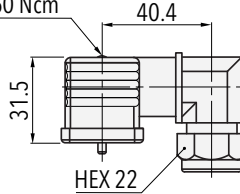
2) O-Ring:  $\phi$  6.75x1.78 NBR 90 Sh

3) Fixing screw: M5; property class: 8.8; torque: 4.5...6 Nm

## Mounting of elbow connector (accessory 55)

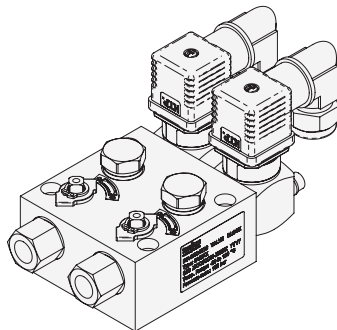


Tighten torque  
50 ... 60 Ncm



- 1) Insert cable
- 2) Connect wires and adjust orientation

## Recommended accessory Diagnostic valve block



## Datasheet



[www.trafag.com/H72361](http://www.trafag.com/H72361)