

6140

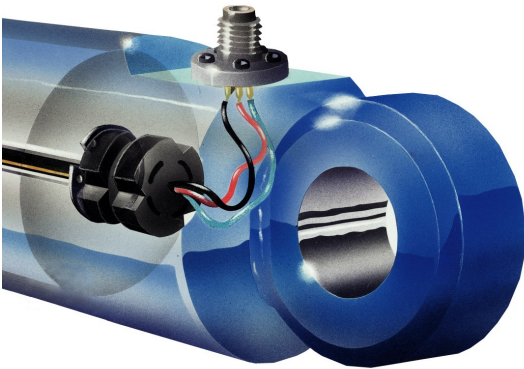
Cylinder connector M12



6140 Back side



6140 Mounting suggestion



6140 is a very robust stainless steel flange connector, designed for heavy duty use in hydraulic applications. Mostly as a hydraulic pressure sealing on the cylinder wall, keeping the oil inside but electrically connecting the incorporated sensor with the system outside.

This flange connector has found to be working 100% during years of use in harsh environments, thanks to the robust design and glass used to keep the high pressure. Working pressure is allowed even up to 350 bar.

6140

- Outstanding life time
- Standard M12 sensor connector
- Working pressure up to 350 bar

SPECIFICATION

Material	Stainless steel
Insulator	Glass
Contacts	52 alloy, gold plated, MIL-G-45204
Max pressure	350 bar with O-ring (not included)
Protection class, M12-side	Up to IP68*
Temperature range	-40°C...+125°C
* Depends on mating connector	

CONNECTION

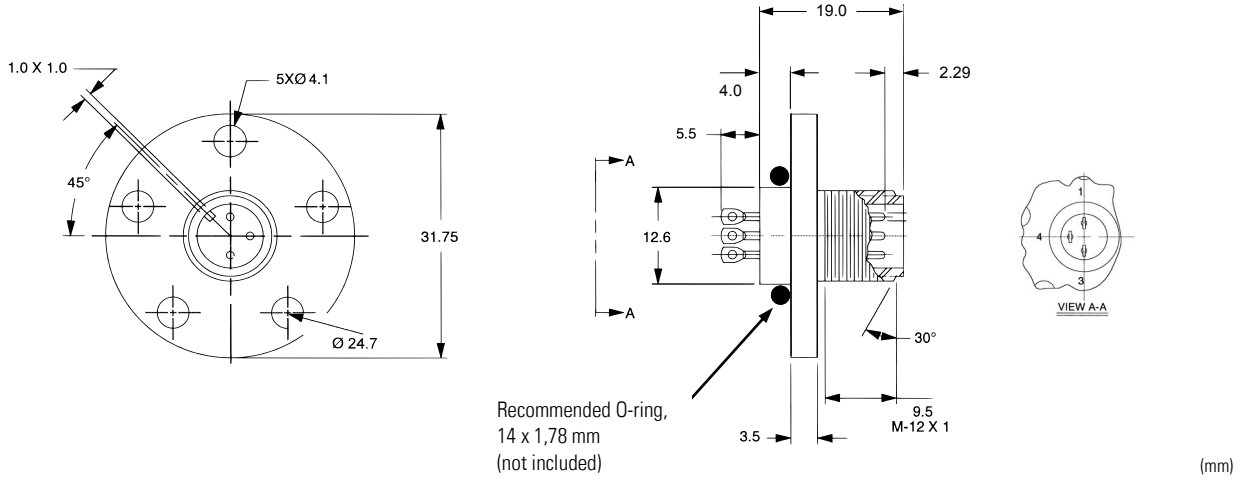
Pin	PS6300	PS6500	RCL40/41	GYcAT4	GYGS
1	Blue	Red	Red / White	Red	Red
3	Black	Black	Black / Brown	Black	Black + Screen
4	Red	Yellow	-	White+Green	White

2024-04-04, specifications subject to change without notice

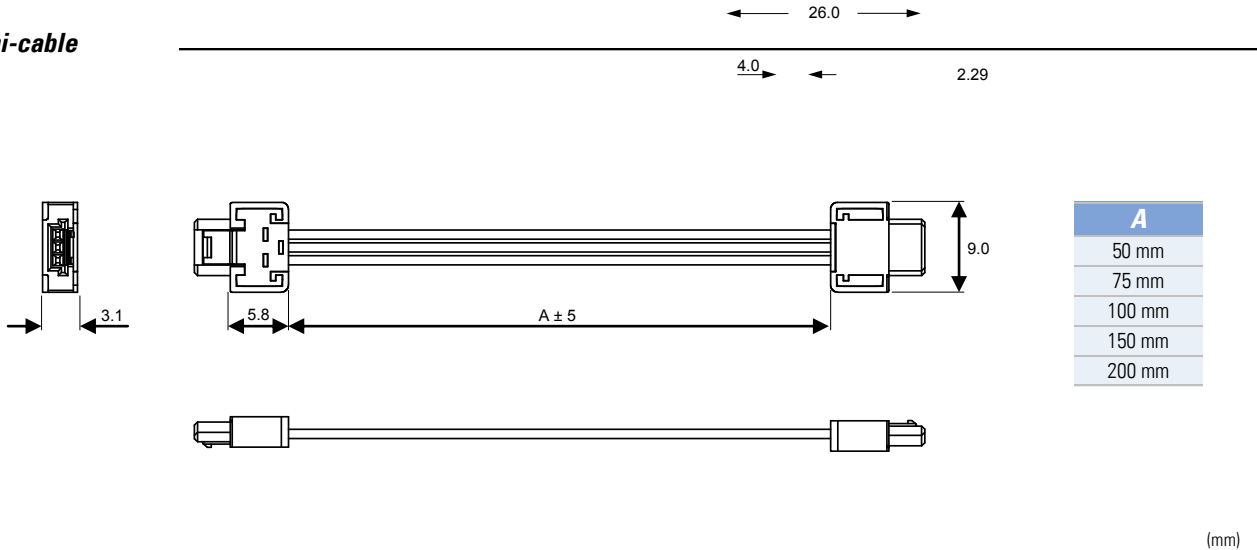
6140

Cylinder connector M12

Flange connector 6140



Mini-cable



2024-04-04, specifications subject to change without notice