

**Target group**

Experienced electricians as defined by the operating safety ordinance and properly instructed personnel.

**Service**


The pressure switches are maintenance-free.

**Related documents**

9R5 data sheet  
[www.trafag.com/H72370](http://www.trafag.com/H72370)



**Type label description**



Serial number: S/N xxxxxx-zzz | 08/21  
 Manufacturing date (W/Y): 08/21  
 Type code: Type 9R5.3AXX.B10  
 Switching point range: SP Range: -0.8...2 bar \*  
 Operating range: OP Range: -1...14 bar | p-max. 14 bar  
 Pin assignment: C(1) NC(2) NO(3) | 250V AC 6A | 110V DC 0.4 (0,2) A | 24V DC 6(5)A  
 Ingress Protection: IP65/IP67 | Temp: -40 ... 85°C  
 Switching rating: 6(5)A

**SP Fixed: 6.5 bar incr.**  
 \* Alternative indication for a fixed switching point according to customer requirements

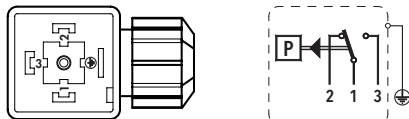
Max. overpressure: 14 bar  
 Operating temperature: -40 ... 85°C

**Microswitch ratings**

Type	Features	Rating Resistive Load (Inductive Load)			
		AC		DC	
3A (Standard)	Silver contacts	250 V	6 (1.5) A	220 V	0.2 (0.1) A
		220 V	6 (1.5) A	110 V	0.4 (0.2) A
		110 V	6 (2) A	48 V	2 (0.75) A
		48 V	6 (2) A	24 V	6 (2) A
		24 V	6 (2) A	12 V	6 (6) A
8A	Gold plated contacts	250 V	6 A	24 V	6 (5) A
				12 V	6 (6) A
					min. 1 mA4V

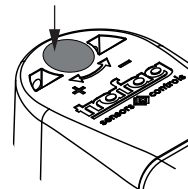
**Electrical connections**

Conductor size range:  
 Minimum 0.75 mm<sup>2</sup> - Maximum 1.5 mm<sup>2</sup>  
 Terminal tightening torque: 0.4 Nm



**Manipulation protection**

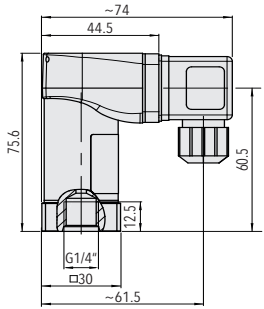
Manipulation protection with seal sticker.  
 Do not remove.



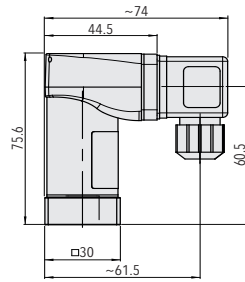
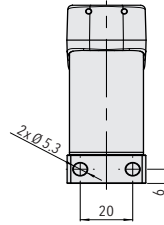
EN175301-803-A

9R5.XXXX.XXX.XX **88**

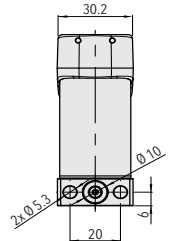
## Dimensions



9R5.XXXX.XXX.04.XX.XX

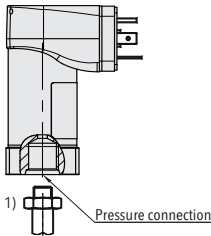


9R5.XXXX.XXX.11.XX.XX

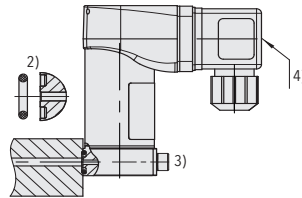


## Mounting / installation

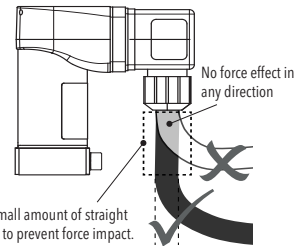
### Axial pressure connection



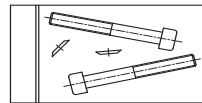
### Flange pressure connection



### Cabling / cable run



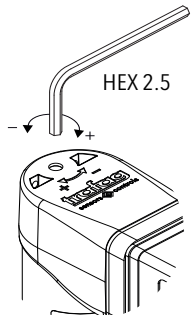
- 1) Torque: G 1/4": MA = 32 ... 40 Nm
- 2) O-ring:  $\varnothing$  6.75 x 1.78
- 3) Fastening screw: M5 x 40  
Property class: V2: steel stainless A4-70  
V3: steel galvanised, grade 8.8
- Mounting torque: 4.5 ... 6 Nm
- 4) Torque connector center screw: max.0.6 Nm



M5x40 ISO4762

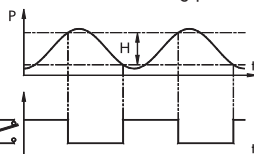
9R5.XXXX.XXX.XX.VX

## Switching point adjustment



- + : increase of the switching point (cw)
- : reduction of the switching point (ccw)

H: The Hysteresis depends on the set switching point.



## Attention

