

# All stainless steel pressure gauges with Bourdon tube with or without glycerine filling

Nominal size ND 40

Accuracy class 1.6

according to DIN EN 837-1

## Features

Ideal for hard conditions

High reliability on a longterm basis

Stainless steel case and measuring system

Overrange protection 1,3 times max.

Protection IP 54 resp.IP 65 (filled)



## Applications

Chemical and petrochemical industry

Foodstuffs and beverages industry

Paper industry

Lebensmittelindustrie

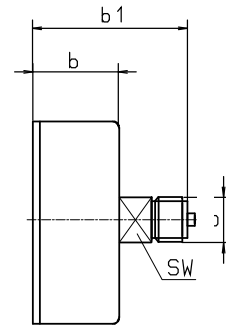
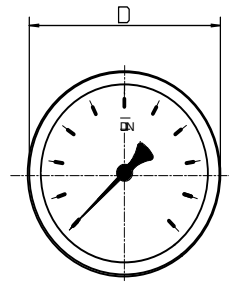
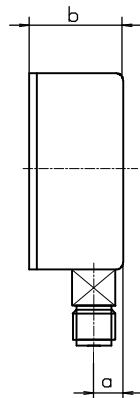
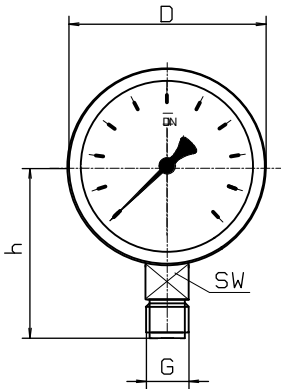
	with glycerine filling			
Models and ND	MR-30 40	MR-34 40	MR-30 F 40	MR-34 F 40
Connections	bottom	back, centric	bottom	back, centric
Ranges in bar	0...1, 1,6, 2,5, 4, 6, 10, 16, 25, 40, 60, 100, 160, 250, 400, 600*) -1 / 0, -1 / +0,6, -1 / +1,5, -1 / +3, -1 / +5, -1 / +9, -1 / +15			
Application	Constant load 3/4 x end of scale value Alternating load 2/3 x end of scale value Short-time : end of scale value			
Case	CrNi steel			
Crimped-on ring	CrNi steel			
Window	Instrument glass			
Dial	Aluminium , white ,scale and imprint black			
Pointer	Aluminium, black			
Movement	CrNi steel			
Measuring element	CrNi-steel 316L, up to 100 bar with Bourdon tube, from 160 bar with coil spring			
Connection	SW 14, CrNi steel 316L			
Connection thread	G 1/8 B			
Protection class	IP 65 to EN 60529 / IEC 529			
Temperature drift	Medium: -20°C to 80°C, Ambient : -25°C to 60°C			
Weight	0,07 kg		0,1 kg	

\*) Ranges 0...600 bar only class 2,5

# Dimensions

Connection bottom

Connection back, centric

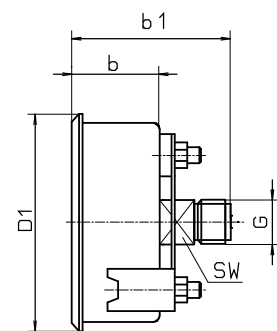
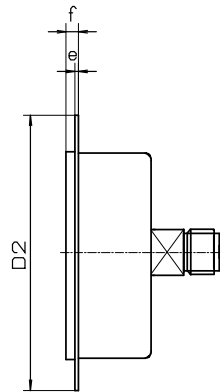
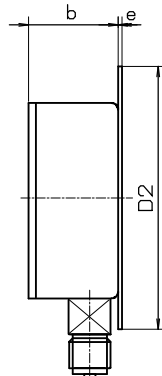
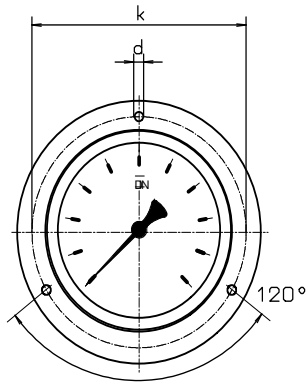


front flange

rear flange

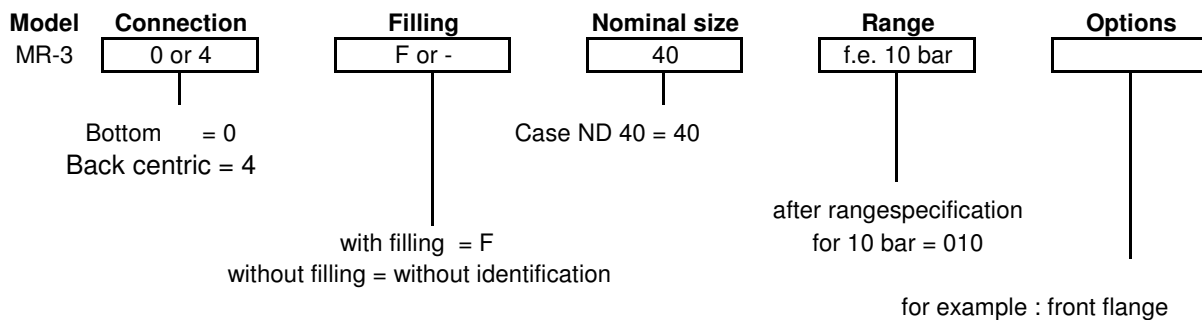
front flange

with triangle bezel a.U-clamp



Dimensions in mm														
Model	NG	D	a	b	b1	h	D1	D2	e	f	k	d	sw	G
MR-30	40	40	10	28	-	35		41,8	0,8		51	3,6	14	G 1/8 B
MR-34	40	40	-	30	47	-	46	41,8	0,8	3,5	51	3,6	14	G 1/8 B
MR-30 F	40	40	10	28	-	35		41,8	0,8		51	3,6	14	G 1/8 B
MR-34 F	40	40	-	30	47	-	46	41,8	0,8	3,5	51	3,6	14	G 1/8 B

## Modelspecification



# All stainless steel pressure gauges with Bourdon tube with or without glycerine filling

Nominal size ND 50

Accuracy class 1.6

according to DIN EN 837-1

## Features

Ideal for hard conditions

High reliability on a longterm basis

Stainless steel case and measuring system

Overrange protection 1,3 times max.

Protection IP 54 resp.IP 65 (filled)



## Applications

Chemical and petrochemical industry

Foodstuffs and beverages industry

Paper industry

Lebensmittelindustrie

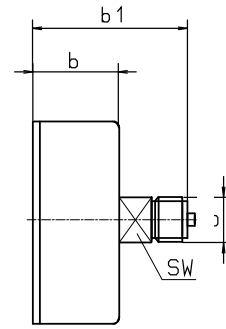
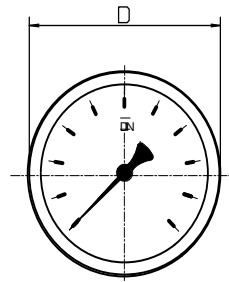
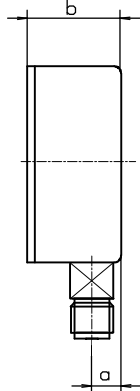
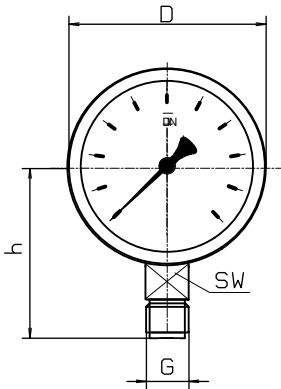
	with glycerine filling			
Models and ND	MR-30 50	MR-34 50	MR-30 F 50	MR-34 F 50
Connections	bottom	back, centric	bottom	back, centric
Ranges in bar	0...1, 1,6, 2,5, 4, 6, 10, 16, 25, 40, 60, 100, 160, 250, 400, 600*) -1 / 0, -1 / +0,6, -1 / +1,5, -1 / +3, -1 / +5, -1 / +9, -1 / +15			
Application	Constant load 3/4 x end of scale value Alternating load 2/3 x end of scale value Short-time : end of scale value			
Case	CrNi steel			
Crimped-on ring	CrNi steel			
Window	Instrument glass			
Dial	Aluminium , white ,scale and imprint black			
Pointer	Aluminium, black			
Movement	CrNi steel			
Measuring element	CrNi-steel 316L, up to 100 bar with Bourdon tube, from 160 bar with coil spring			
Connection	SW 14, CrNi steel 316L			
Connection thread	G 1/8 B			
Protection class	IP 65 to EN 60529 / IEC 529			
Temperature drift	Medium: -20°C to 80°C, Ambient : -25°C to 60°C			
Weight	0,07 kg		0,1 kg	

\*) Ranges 0...600 bar only class 2,5

# Dimensions

Connection bottom

Connection back, centric

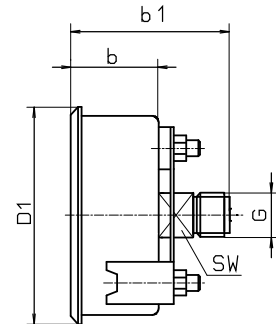
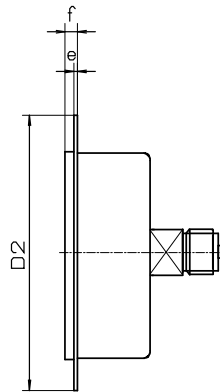
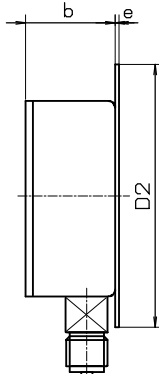
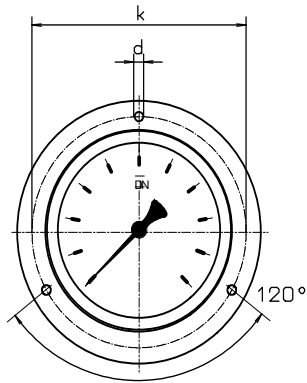


front flange

rear flange

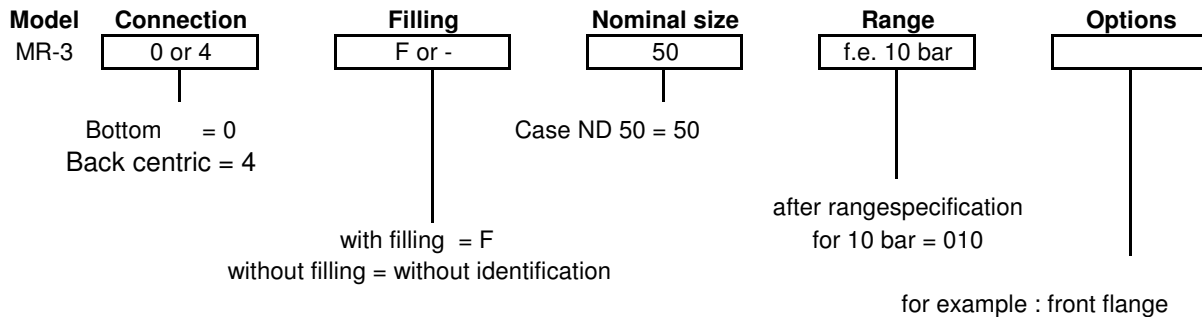
front flange

with triangle bezel a.U-clamp



Dimensions in mm														
Model	NG	D	a	b	b1	h	D1	D2	e	f	k	d	sw	G
MR-30	50	54	10	29	-	45		51	1		60	3,6	14	G 1/4 B
MR-34	50	54	-	31	50	-	54	51	1	8	60	3,6	14	G 1/4 B
MR-30 F	50	54	10	29	-	45		51	1		60	3,6	14	G 1/4 B
MR-34 F	50	54	-	31	50	-	54	51	1	8	60	3,6	14	G 1/4 B

## Modelspecification



# All stainless steel pressure gauges with Bourdon tube with or without glycerine filling

Nominal size ND 63  
Accuracy class 1.6

according to DIN EN 837-1

## Features

Ideal for hard conditions  
High reliability on a longterm basis  
Stainless steel case and measuring system  
Overange protection 1,3 times max.  
Protection IP 54 resp.IP 65 (filled)



## Applications

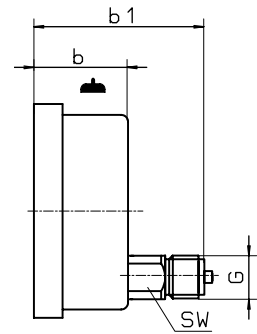
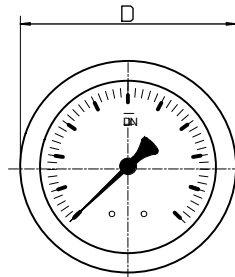
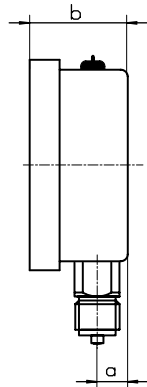
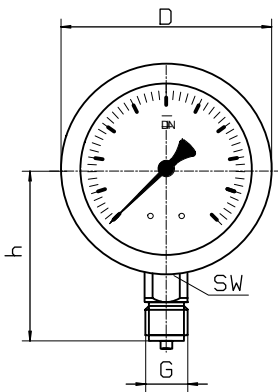
Chemical and petrochemical industry  
Foodstuffs and beverages industry  
Paper industry

	with glycerine filling			
Models and ND	MR-30 63	MR-35 63	MR-30 F 63	MR-35 F 63
Connections	bottom	back, eccentric	bottom	back, eccentric
Ranges in bar	0...1, 1,6, 2,5, 4, 6, 10, 16, 25, 40, 60, 100, 160, 250, 400, 600, 1.000 -1 / 0, -1 / +0,6, -1 / +1,5, -1 / +3, -1 / +5, -1 / +9, -1 / +15			
Application	Constant load : up to full scale value Alternating load : up to 0,9 x full scale value Overange protection 1,3 times max.			
Case	CrNi steel			
Bezel	CrNi steel			
Window	Laminated safety glass			
Dial	Aluminium , white ,scale and imprint black			
Pointer	Aluminium, black			
Movement	CrNi steel			
Measuring element	CrNi steel , Bourdon tube <40 bar, helical tube > 60 bar,			
Connection	CrNi steel			
Connection thread	G 1/4 B			
Protection	IP 65 to EN 60529 / IEC 529			
Temperature drift	Medium: -20°C to 80°C, Ambient : -25°C to 60°C			
Weight	0,2 kg		0,25 kg	

## Dimensions

Connection bottom

Connection back, eccentric

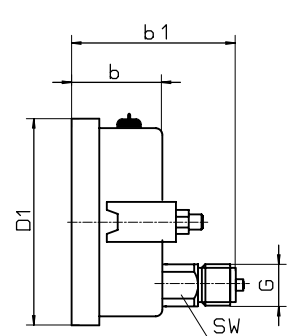
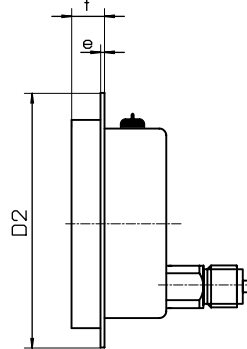
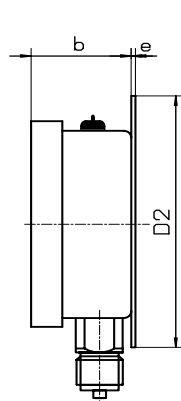
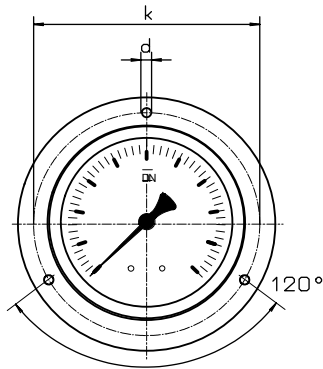


front flange

rear flange

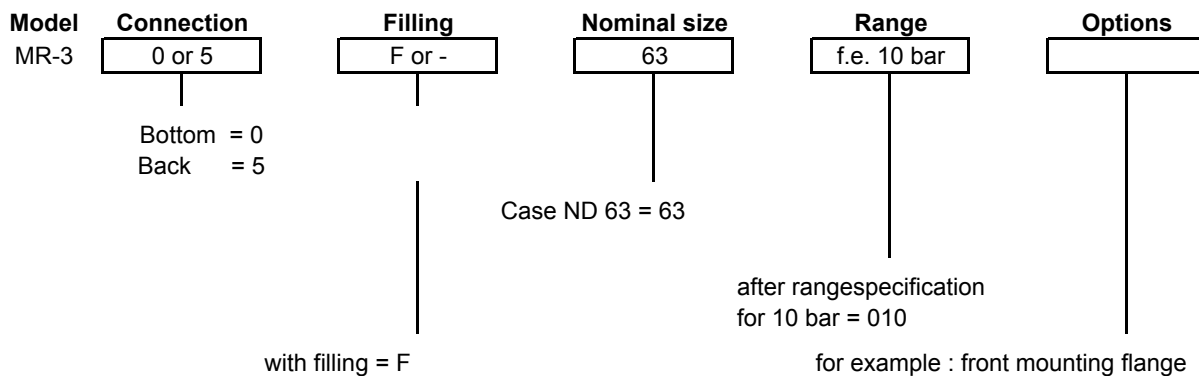
front flange

with triangle  
bezel a.U-clamp



Dimensions in mm														
Model	NG	D	a	b	b1	h		D2	e	f	k	d	sw	G
MR-30	63	68,5	9,5	31	-	53		85	3	16	75	3,7	14	G 1/4 B
MR-35	63	68,5	-	31	60	-		85	3	16	75	3,7	14	G 1/4 B
MR-30 F	63	68,5	9,5	31	-	53		85	3	16	75	3,7	14	G 1/4 B
MR-35 F	63	68,5	-	31	60	-		85	3	16	75	3,7	14	G 1/4 B

### Modelspecification



# All stainless steel pressure gauges with Bourdon tube

Nominal size ND 100 ,ND 160  
Accuracy class 1.0

according to DIN EN 837-1

## Features

Ideal for hard conditions  
High reliability on a longterm basis  
Stainless steel case and measuring system  
Overrange protection 1,3 times max.  
Protection IP 54 resp.IP 65 (filled)



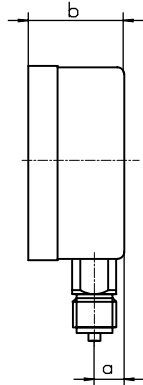
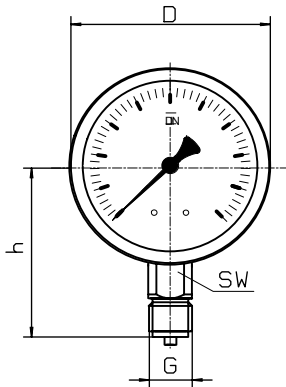
## Applications

Chemical and petrochemical industry  
Foodstuffs and beverages industry  
Paper industry

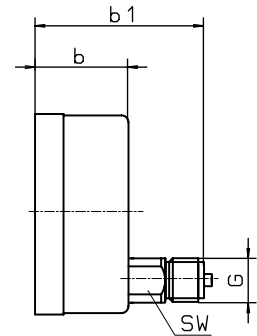
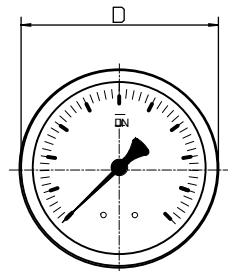
Models and ND	MR-30 100	MR-35 100	MR-30 160	MR-35 160
Connections	bottom	back, eccentric	bottom	back, eccentric
Ranges in bar	0...0,6, 1, 1,6, 2,5, 4, 6, 10, 16, 25, 40, 60, 100, 160, 250, 400, 600, 1.000, 1.600 -0,6 / 0, -1 / 0, -1 / +0,6, -1 / +1,5, -1 / +3, -1 / +5, -1 / +9, -1 / +15, -1 / +24			
Application	Constant load : up to full scale value , >1000 bar 3/4 Alternating load : up to 0,9 x full scale value , > 1000 bar 2/3 Overrange protection 1,3 times max. , > 1000 bar full scale value			
Case	CrNi steel , pressure relief opening ( closed with rubber disk)			
Bezel	CrNi steel			
Window	Laminated safety glass			
Dial	Aluminium , white ,scale and imprint black			
Pointer	Aluminium, black			
Movement	CrNi steel			
Measuring element	CrNi steel ,Bourdon tube <40 bar, helical tube > 60 bar,			
Connection	CrNi			
Connection thread	G 1/2 B			
Protection	IP 54 to EN 60529 / IEC 529			
Temperature drift	Medium: -20°C to 80°C, Ambient : -25°C to 60°C			
Weight	0,6 kg		1,0 kg	

## Dimensions

Connection bottom



Connection back, eccentric

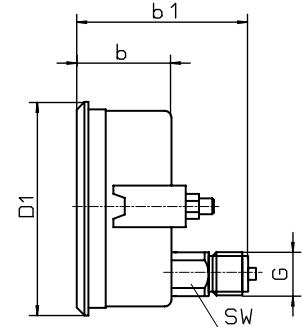
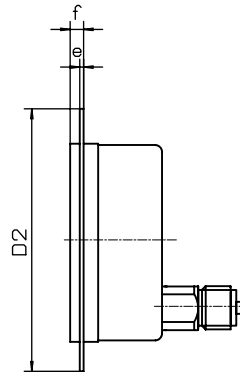
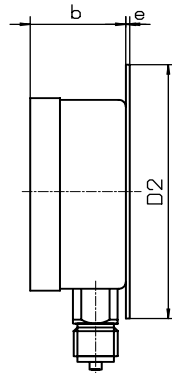
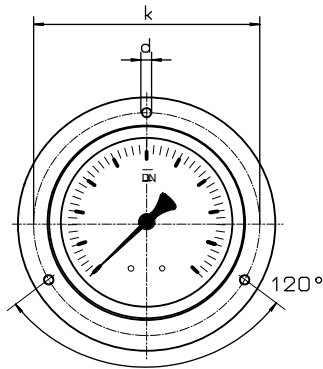


front flange

rear flange

front flange

with triangle bezel a. U-clamp



Dimensions in mm														
Model	NG	D	a	b	b1	h	D1	D2	e	f	k	d	sw	G
MR-30	100	101	15	49	-	86	107	132	2	6	116	5	22	G 1/2 B
MR-35	100	101	-	49	85	-	107	132	2	6	116	5	22	G 1/2 B
MR-30	160	160	15	51	-	118	-	196	3	8	178	5,6	22	G 1/2 B
MR-35	160	160	-	51	86	-	166	196	3	8	178	5,6	22	G 1/2 B

### Modelspecification

