



The GY-series from Regal Components offer sensors that meet the highest demands on the market from one of the leading suppliers in Japan. Decades of experience ensures you highest quality.

The magnetostrictive principle, non-contact, offers very high performance and linearity combined with extremely long lifetime.

With its integrated electronics and compact design the GYMA sensor gives you unique possibilities for both hydraulic and pneumatic cylinders. It can also be used in other applications such as liquid level detection. The small housing makes it easy to mount and install.

Regal Components offers you the best available support and knowledge in position sensing, with decades of experience.

Regal Components, your choice in position sensing.

CONNECTION

Pin	GYMA	Pigtail	Regals M12 kabel
1	+24 VDC	Red	Brown
2	0 V	White	White
3	Output	Black	Blue
4	COM	Green	Black
Shield		Chassi of sensor	

SPECIFICATIONS

Supply voltage	22-28 VDC (100mA)
Output signal	
Current	4-20 mA / 20-4 mA (Load resistance max 500Ω)
Independent linearity	≤ ±0.05% FS*
Resolution	≤ 0,1 mm*
Repeatability	≤ ±0,1 mm*
Sample rate	1 kHz
Stroke length	15-2000 mm
Temperature	
Operating	-20°C...+80°C
Storage	-40°C...+80°C
Temperature drift	≤ 0,03% FS/°C
Material	SS304
Vibration	6G
Shock	50 G
Max. Pressure	350 bar
Protection class	IP67
Polarity protection	Yes
* The above mentioned accuracy applies to sensors with an effective stroke of 300 mm or more.	

ORDER INFORMATION

GYMA - □□□□-□/□-□-□-□-□
1 2 3 4 5 6 7

1 Stroke (15-2000mm)

2 Sensor head dead zone

S: 50 mm (std)

3 Sensor tip dead zone

S: 70 mm/90 mm/100 mm (std),

Depends on the magnet.

4 Thread / Rod diameter

J8: M20xP1,0 Rod dia. 8 mm (Std)

L8: M16xP2,0 Rod dia. 8 mm

E8: M20xP1,5 Rod dia. 8 mm

N: M18xP1,5 Rod dia. 10 mm

U: 3/4-16UNF-3A Rod dia. 10 mm

5 Magnet

M2PN: No.2PN (std)

View Magnet datasheet for more alternatives.

6 Connection type

GnF: Pigtail/cable end (std)

GnA: Pigtail/cable end with connector

CN: Connector M12

n=cable length (m)

7 Positional output

BD: 4-20 mA (std)

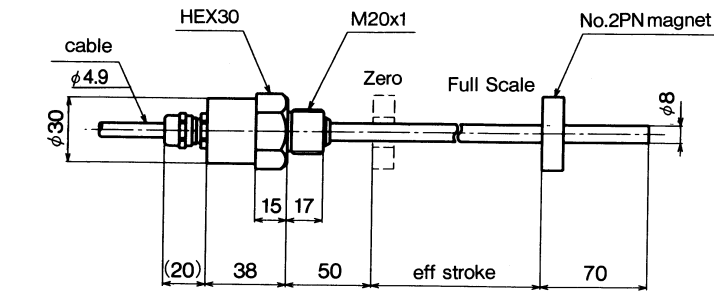
BR: 20-4 mA

Other alternatives available. Please contact Regal Components for more information.

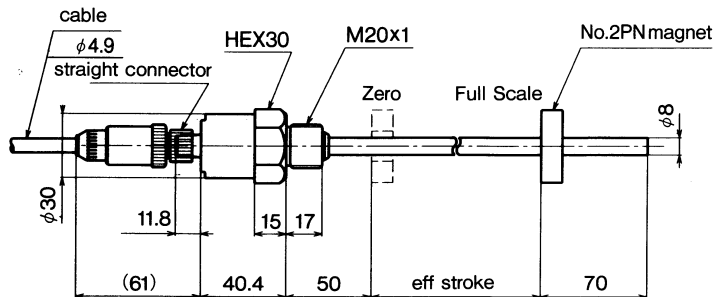
2016-04-22, specifications subject to change without notice

GYMA

Material Probe head : SS304
Probe rod : SS304

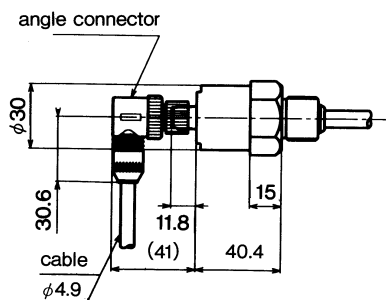


【Pig tail type(std)】



【Connector(option)】

Connector type
XS2C-D4S1(omron)

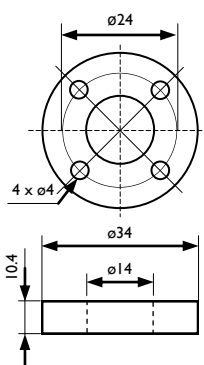


【angle type connector(option)】

Connector type
XS2C-D4S2(omron)

(mm)

MAGNET 2PN



(mm)

EXAMPLE OTHER MAGNETS



Contact us for more information

2016-04-22, specifications subject to change without notice

ISO 9001
BUREAU VERITAS
Certification



REGAL COMPONENTS AB • LEFFLERSGATAN 1 • SE-754 50 UPPSALA • SWEDEN
+46 (0)18-65 70 00 • WWW.REGAL.SE • INFO@REGAL.SE

Regal